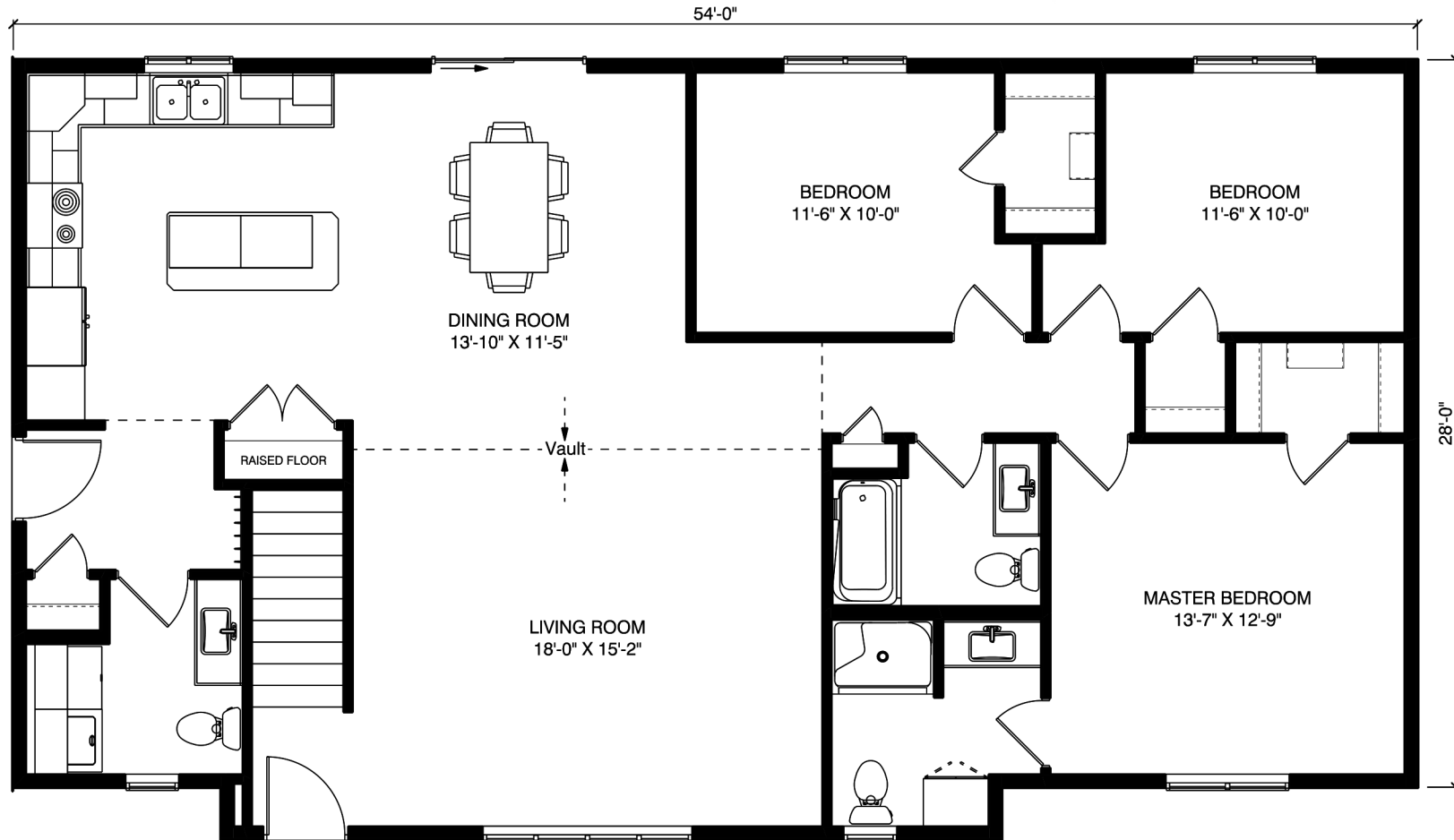


THE PELICAN

FORMERLY BROADWAY

Steinmetz
REDI-BUILT HOME CENTER



1572 SQFT

-  3 BED
-  WALK IN CLOSETS
-  2 1/2 BATH
-  OPEN CONCEPT
-  LARGE PANTRY
-  VAULTED CEILINGS
-  LARGE ISLAND

